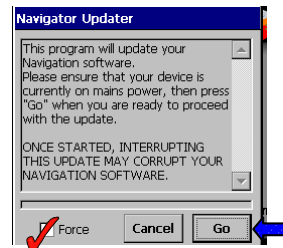


Update Installation Guide

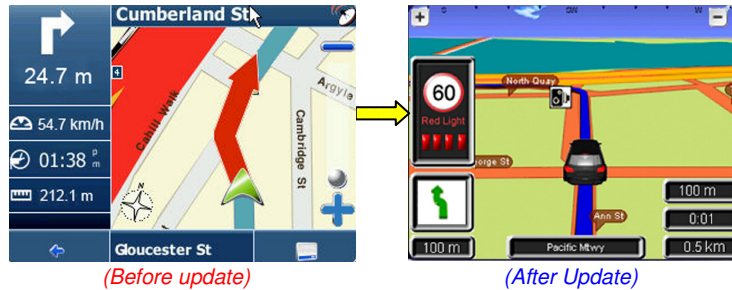
1st edition
www.binatone.com.au
Binatone Navigation software

The Binatone Navigation System software update comes with a number of enhancements and fixes. A few simple instructions below will show you how to install the update.

- 1) Place the SD card supplied in either the X350 or X430 and reset the unit.
- 2) Once you're on the main menu screen, Press the "Navigation" button
- 3) Tick 'force' & press 'Go' & the updater will do the rest and the application will start.



- 4) Once finished, remove the card & reset the unit. On the main menu screen tap the navigation button again and the new updated version will start.



The new software design is now featured on your Binatone GPS unit & ready to go Pre-installed with Safety Camera Alert

For assistance, please contact Binatone technical support
1300 768 112
service@shiro.com.au