



Update Installation Guide

1st edition

www.binatone.com.au

Binatone Navigation software

Updating your Binatone Navigation System

The Binatone Navigation System software update comes with a number of enhancements and fixes and this guide will show you how to install the update.

Installing Microsoft Activesync

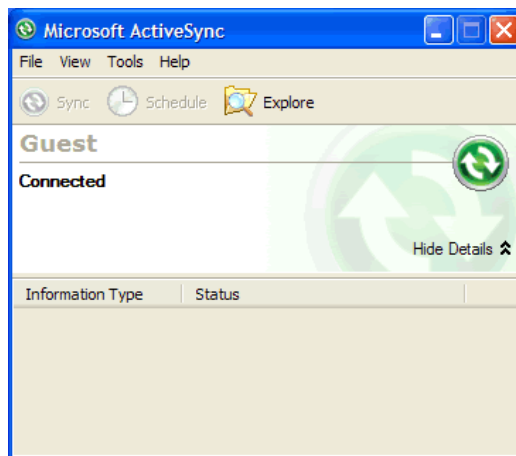
Unless you are using Windows Vista (which comes complete with a version of Activesync), you will need to download and install Microsoft Activesync to enable you to connect your navigation device to your PC.

You can obtain a copy by clicking on this link to download:-

[Click Here to Download Microsoft Active Sync](#)

Once you have downloaded Activesync, follow the installation instructions carefully and only connect your device when prompted to do so.

Once installed, make sure that your navigation device is connected to your PC via the USB cable and that Activesync has recognised the device and is showing it as 'Connected' (as below).



Now you have completed the Activesync installation you can now run and install the software update.

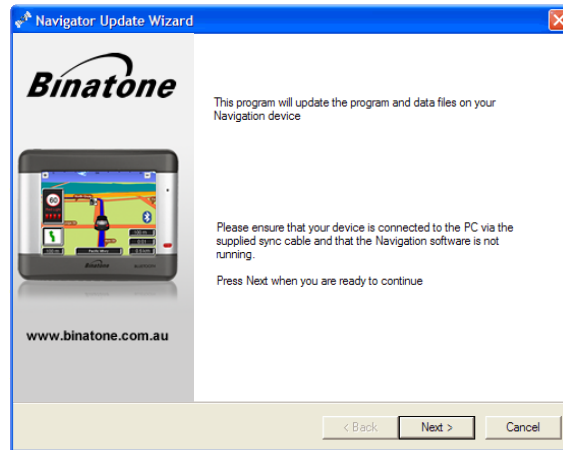
If you are having difficulties with Windows Vista installing your navigation device, please [Click Here](#) for a trouble shooting guide.

Installing the upgrade

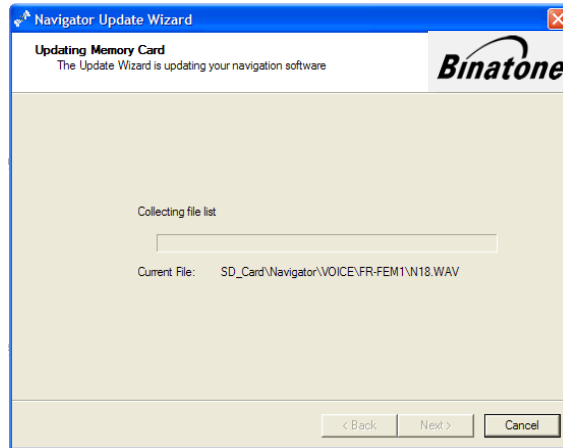
With the navigation device connected to your PC, make sure that you have the device switched on but make sure that you are NOT in the navigation software, just the device startup screen (as below).



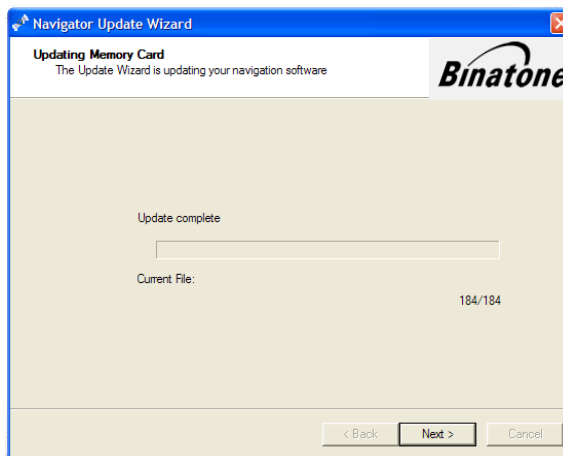
Next double click the Binatone_Upgrade_Wizard.exe file that you saved earlier to your desktop. This will start upgrade wizard (see below).



Click 'Next' and the wizard will analyse your device and start copying over the update.



Once the update is complete click 'Next' and then 'Finish' on the following screen.



The update is now complete. Unplug your device from your PC and your ready to start navigating again.